



TÜRKIYE-SYRIA EARTHQUAKES RESPONSE

1 MONTH REPORT
FEB 2023-MARCH 2023



CONTENTS

2

Situation Overview

3

Concept of Operations

4

About Airlink

5

Airlink's Response

11

Our Partners

13

Our Donors



SITUATION OVERVIEW

FEBRUARY - MARCH 2023

On the morning of February 6th, a 7.8 magnitude earthquake and subsequent aftershocks as strong as 7.5 magnitude, struck Türkiye's Gaziantep Province. Primary impacts were seen in southwestern Türkiye and northeastern Syria. The earthquakes are estimated to be the most severe in the region for 100 years.

Government authorities in both Türkiye and Syria requested international assistance, with a need for search and rescue being of greatest need in the first instance. The Turkish government declared a level 4 emergency and a state of emergency in 10 provinces across southeast Türkiye.

The most recent reports indicate that more than 54,000 people have been killed, 50,000 injured, and thousands of buildings across Türkiye and Syria have been destroyed. Currently, as many as 1.5 million people in Türkiye remain homeless in freezing conditions, and an estimated 11 million people in Syria are currently homeless.

. The international community continues to mobilize personnel and resources to assist with search and rescue, medical support, temporary shelter, and water and food insecurity.

In southeast Türkiye, millions still lack power, clean water access, and reliable telecommunication. Displaced people, civilians trapped in destroyed infrastructure, and rapid responders face abnormal winter weather conditions with temperatures near freezing and forecasted winter storms.

Based on Airlink's experience of responding to past earthquakes, we anticipate a sustained response will be required to support impacted communities in the short, medium, and long term. Responding to a disaster requires a dynamic approach as needs shift over time. In the space of a month, in this response, initial aid requirements have already shifted from an emphasis on search and rescue teams and temporary accommodation to hygiene kits, medical relief, and baby care items.



OUR CONCEPT OF OPERATIONS

AIRLIFT OF EMERGENCY SUPPLIES & RESPONDERS

About Airlink

Airlink is a humanitarian organization delivering critical aid to communities in crisis by providing airlift and logistical solutions to nonprofit partners, changing how the humanitarian community responds to disasters worldwide.

Concept of Operations

Airlink supports the humanitarian response of credible NGOs. By coordinating with nonprofit partners, the UN system, the private sector, and donors, Airlink is optimizing the delivery of the extensive humanitarian aid required, minimizing duplication of effort, and channeling aviation sector resources towards priority needs.

Anticipated Requirements

Airlink has committed to raising \$1.85 million to fund the transport requirements of NGO partners for an initial 90-day response period. However, we anticipate our response will continue for all of 2023 and possibly beyond due to the extensive human need and damage caused by the earthquakes. In light of the scale of the need, we anticipate the greatest NGO requirement will be for air cargo space and trucking. Because of Airlink's partnership with 50 airlines and our commitment to sustainable transport solutions to global disasters, our first and preferred option is to utilize capacity within commercial airlines. However, we anticipate the scale of response needed to be such that charter flights will also be required. This changes the cost profile of our response considerably. But, Airlink is ideally positioned to meet all these challenges on behalf of our NGO partners and the impacted communities they support..



ABOUT AIRLINK - HOW WE RESPOND

2 Following an emergency, Airlink engages the donors and aviation actors it has developed partnerships with in order to mount a rapid response.

4 Airlink helps private sector aviation engage in emergencies by helping them vet organizations they wish to support, as well as matching their capacity with people and goods in need of transport.

7 When last-mile challenges exist, Airlink works with logistics partners, as well as private sector and nonprofit aviation operators, to find the best solution to get goods and expert personnel to their final destination.



1 When an emergency occurs, Airlink already knows which NGOs are likely to respond and what their transport needs will be, thanks to continuous, year-round engagement.

3 Airlink assists with document review and shipping guidance to ensure flight safety, alignment with needs, and efficient customs clearance.

The organization also connects active agencies for multisector collaboration and information sharing through coordination calls.

5 Airlink utilizes existing commercial capacity where possible to send personnel and supplies.

6 When goods arrive in-country, Airlink and its logistics partners ensure they clear customs and move through the airport quickly to avoid supply chain constriction.

8 Programs supported by Airlink reach communities in need around the world with a wide variety of assistance - from USAR and emergency medical assistance, to long-term solutions to clean water and shelter.

IN 2022, ACROSS 38 RESPONSES, AIRLINK AIRLIFTED 1,458 RESPONDERS AND 3.2M POUNDS OF AID TO 12.3M PEOPLE IN 38 COUNTRIES, PROVIDING 56 NGOS WITH ALMOST \$3M IN TRANSPORTATION SAVINGS.



AIRLINK'S RESPONSE

FEBRUARY - MARCH 2023



19

AVIATION & LOGISTICS
PARTNERS



21

NONPROFIT
ORGANIZATIONS



455

TONS OF RELIEF
SUPPLIES DELIVERED



135

RESPONDERS
SENT

RIGHT AID. RIGHT TIME. RIGHT PLACE.

OUR RESPONSE: TÜRKIYE - SYRIA EARTHQUAKES

FEBRUARY - MARCH 2023



THE FIRST STEP IN DISASTER RESPONSE IS GETTING THERE

In the immediate aftermath of the earthquake on February 6, Airlink swiftly activated its **Middle East and North Africa Regional Response Plan**. Within a few hours of the request from the Turkish Government for international assistance, Airlink was in contact with our NGO partners to determine their needs and coordinate airlift; within 13 hours Airlink had search and rescue teams from our NGO partners in the air on their way to Türkiye.

Despite **significant logistical challenges**, especially in relation to moving people and cargo into Syria, due to the ongoing conflict in the country, Airlink has mobilized its airline, logistics, and NGO partners to move over **455 tons of aid** and **135 responders** on behalf of **21 NGO partners**. At the time of writing, a further **900 tons of aid are in our active pipeline**.

Airlink has actively engaged with **19 airline partners** and has been working directly with **Turkish Airlines, American Airlines, Pegasus Airlines, United Airlines, UPS, and Virgin Atlantic Cargo**, and logistics partners **Flexport.org, Priority Worldwide Services, and SEKO Logistics** to move responders and cargo, supporting aid programs in both Türkiye and Syria.

Airlink is a demand-led organization responding directly to the needs of legitimate NGOs capable of distributing aid on the ground, whether through their ground teams or in partnership with local organizations with identified needs. Airlink has directly supported transport needs for 21 NGOs so far but has been actively engaged with 59 NGOs, including new partners **GAiN, LA Sheriff Reserve Association, Serve On, and PKPU Human Initiative**. We have supported Turkish Red Crescent while also supporting other international organizations that AFAD has specifically approved.

Airlink has supported and will continue supporting the humanitarian community through cargo flight options into Istanbul (IST), Adana (ADA). Airlink's logistics partners have the capacity to support customs clearance and in-country transport as needed.

Utilizing **our network of global airline partners**, Airlink has flown personnel from the US, Europe, the United Kingdom, Canada, and beyond, into Istanbul (IST), Adana (ADA), Malatya (MLX), and Sanliurfa (GNY). Airport capacity in Turkey has been subject to change with ongoing damage assessments.

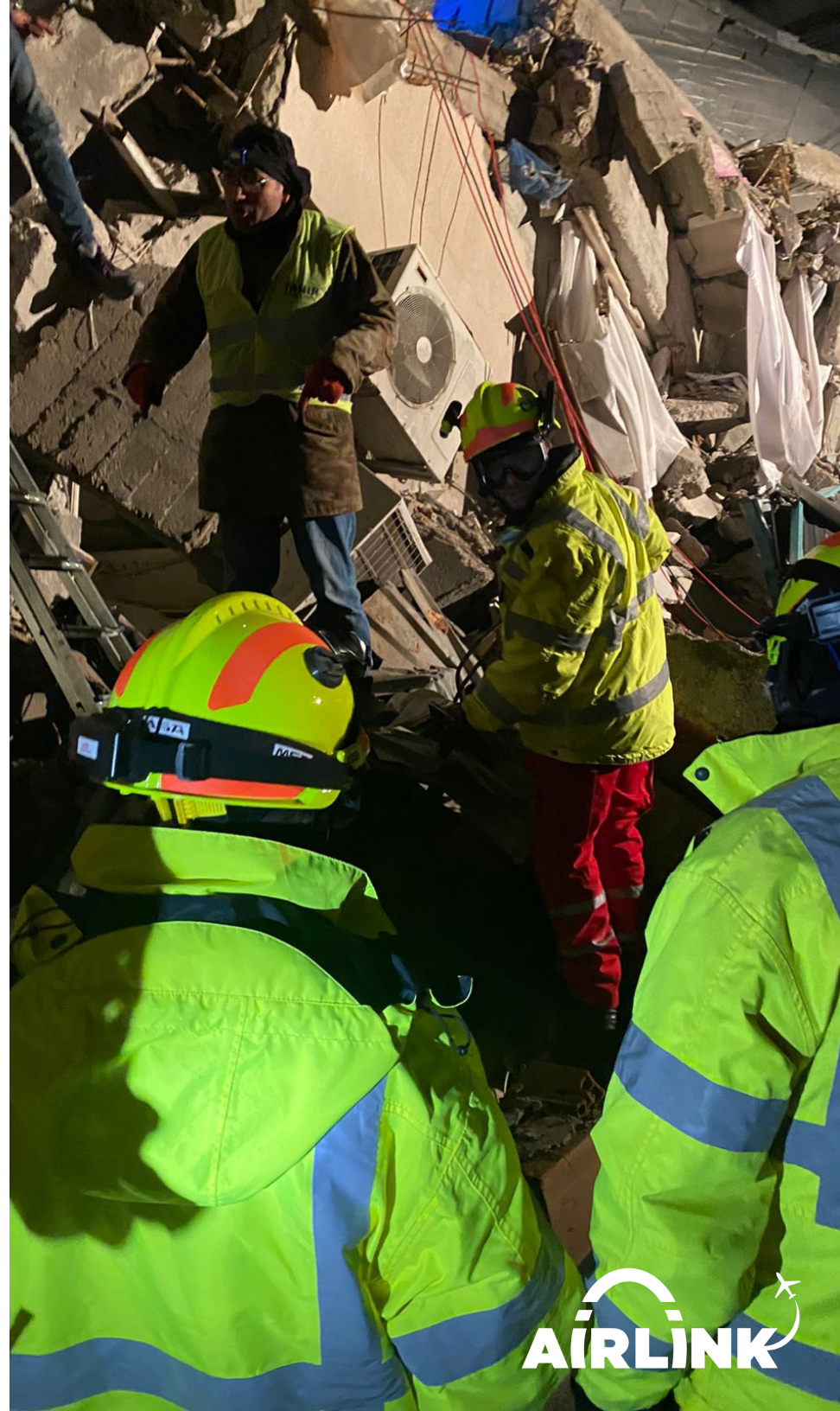
OUR RESPONSE: TÜRKIYE - SYRIA EARTHQUAKES

FEBRUARY - MARCH 2023

It is a testament to the depth and the reach of Airlink's airline and donor network, that no matter the logistical challenges Airlink has been able to move cargo from across the globe. For example, with airlift from **Turkish Airlines Cargo**, we've coordinated movement for over **230 tons** of shelter supplies - three Boeing 777 freighters - on behalf of the **International Federation of Red Cross and Red Crescent Societies (IFRC)** from Pakistan. This included 3,000 tents and winterization kits, which will be used to improve the insulation of the tents, **protecting up to 3,000 families** from winter conditions. This is just the beginning of an extensive air bridge. Thank you to our partners, **Priority Worldwide** and **Turkish Airlines Cargo**.

In Syria, 30% of healthcare facilities and hospitals have been destroyed, and the remaining institutions are becoming increasingly overwhelmed amid a cholera outbreak. The greatest need is for medical supplies and medicines. Civilians that have experienced years of civil war and displacement have been further displaced. Humanitarian aid hubs situated underground in response to the war are now difficult to access and operate from in rebel-held regions.

Earlier this year, the UN Security Council extended the Syria cross-border aid lifeline ensuring humanitarian activities in the region continue through transit between Türkiye and northeastern Syria. Since then, the EU has updated its sanctions and will funnel aid into Syria's regime- and rebel-controlled areas. The logistical challenges have been and remain considerable, but Airlink has moved **medical equipment into Syria** on behalf of our NGO partner **SAMS** to support impacted communities.



SEARCH AND RESCUE

NGO SPOTLIGHT: CADENA



Long-standing NGO partner, CADENA International worked with Airlink to deploy its 'Go Team' of 10 members focused on search and rescue, tasked with looking for survivors. At the same time, they deployed a team of 6 doctors to provide medical assistance. Working in Kharanmamaras and supporting local agencies, the **volunteers provided over 3,072 hours of search and rescue and medical assistance**. The team conducted life scans on 20 collapsed buildings and rescued 4 survivors from the rubble.

SEARCH & RESCUE, MEDICAL SUPPORT, FOOD, & SHELTER

NGO SPOTLIGHT: EMPACT NORTHWEST

Empact Northwest is a nonprofit partner that specializes in Search & Rescue, Training, and disaster preparedness.

Airlink's support allowed Empact to quickly deploy personnel and supplies to the affected areas. The rapid response and transportation support provided by Airlink helped Empact maximize their time in the field, providing critical support to the affected population through their search and rescue skill, but then teams were able to pivot to provide medical and humanitarian aid. This was essential to increase the impact of Empact Northwest's efforts, particularly in the distribution of humanitarian aid. With Airlink's support, Empact was able to **distribute 1,950 kg of food, water, and hygiene & shelter supplies, supporting 40 families, made up of 155 total people, in just four days.**



WATER, SANITATION, AND HYGIENE

NGO SPOTLIGHT: WATER MISSION



During any disaster, clean, safe water is critical. It helps prevent the spread of waterborne illnesses, which are especially deadly to young children.

Within hours of the disaster and the call from the Turkish and Syrian governments for international assistance, AirlinK and Water Mission worked together to get **five members of their Disaster Assistance Response Team (DART)** to Türkiye.

The team initially implemented WASH activities as a preliminary step, followed by sending five water treatment systems that can serve up to **25,000 people per day with safe water**. Water Mission will also help to implement sanitation activities.

ESTABLISHING AN AIRBRIDGE

SPOTLIGHT: INTERNATIONAL FEDERATION OF RED CROSS AND RED CRESCENT SOCIETIES



By far Airlink's biggest single undertaking has been the establishment of an airbridge from Pakistan to Türkiye, in partnership with **IFRC** and **Turkish Airlines Cargo**.

The airbridge will move a total of **800 tons of humanitarian cargo**, with the first **315 tons** having already been moved. Within that cargo movement there were assorted medical supplies and over **3,000 tents and winterization kits**, identified by the Turkish government as being a critical need, as many Turkish citizens cope with a lack of shelter and winter conditions.

THANK YOU TO OUR PARTNERS

IMPLEMENTING PARTNERS



#For a full list of Airlink's NGO partners visit our website.

THANK YOU TO OUR PARTNERS

AVIATION & LOGISTICS PARTNERS

Thanks to all of the airline and logistics partners that have donated cargo capacity, airline tickets, air miles, trucking services, and freight forwarding capabilities to mobilize relief aid and personnel to support the response to the crisis in Turkey and Syria. Donated and discounted airlift and other in-kind support help Airlink's funding go further. Without these ongoing partnerships, many of the programs carried out by Airlink's NGO partners this year would not have been possible on the same scale—and many times, they would not have been possible at all.



#For a full list of Airlink's airline and logistics partners visit our website.

THANK YOU TO OUR DONORS

INDUSTRY & FOUNDATION FUNDING PARTNERS



#For a full list of Airlink's funding partners visit our website.

SPECIAL THANKS TO EVERYONE GIVING THROUGH...

- ISTAT Members and Member Companies
- Family & Community Foundations
- CNN Impact Your World
- United MileagePlus
- Schwab Charitable & Fidelity Charitable Donor Advised Funds
- Workplace Giving & Matching Campaigns



For more information about the activities in this report,
please contact:

Sandra Walter, Development Director
swalter@airlinkflight.org / +1.202.550.7692

Stephanie Steege, Humanitarian Programs Director
ssteege@airlinkflight.org / +1.703.596.2171